

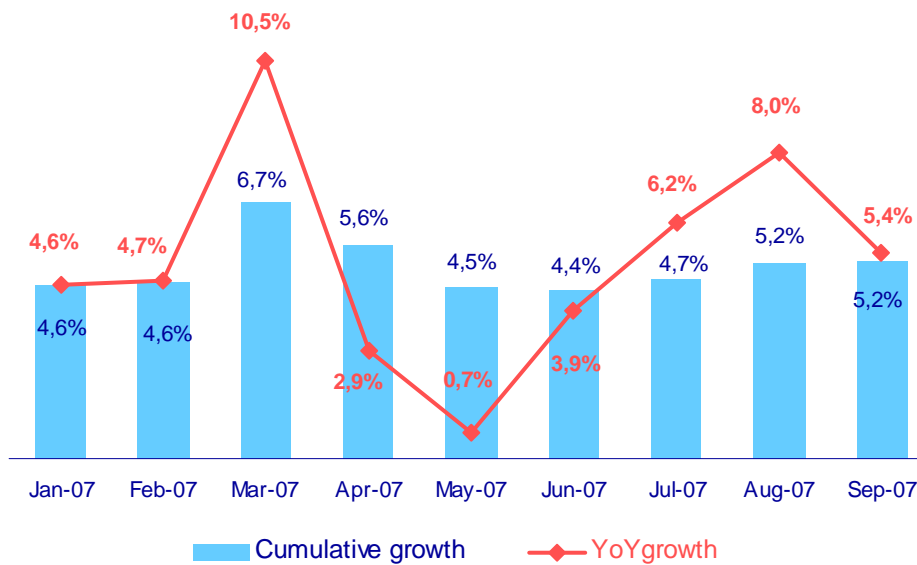
Aéroports de Paris First Nine Months 2007 Revenue

November 9, 2007

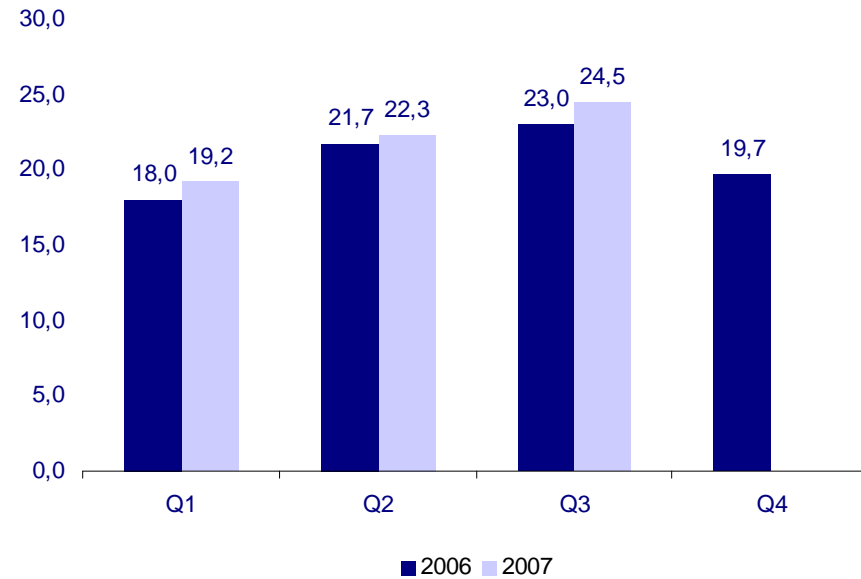


Strong traffic growth at Paris-CDG and Paris-Orly

Passenger traffic growth (in %)



Passenger traffic (in millions)

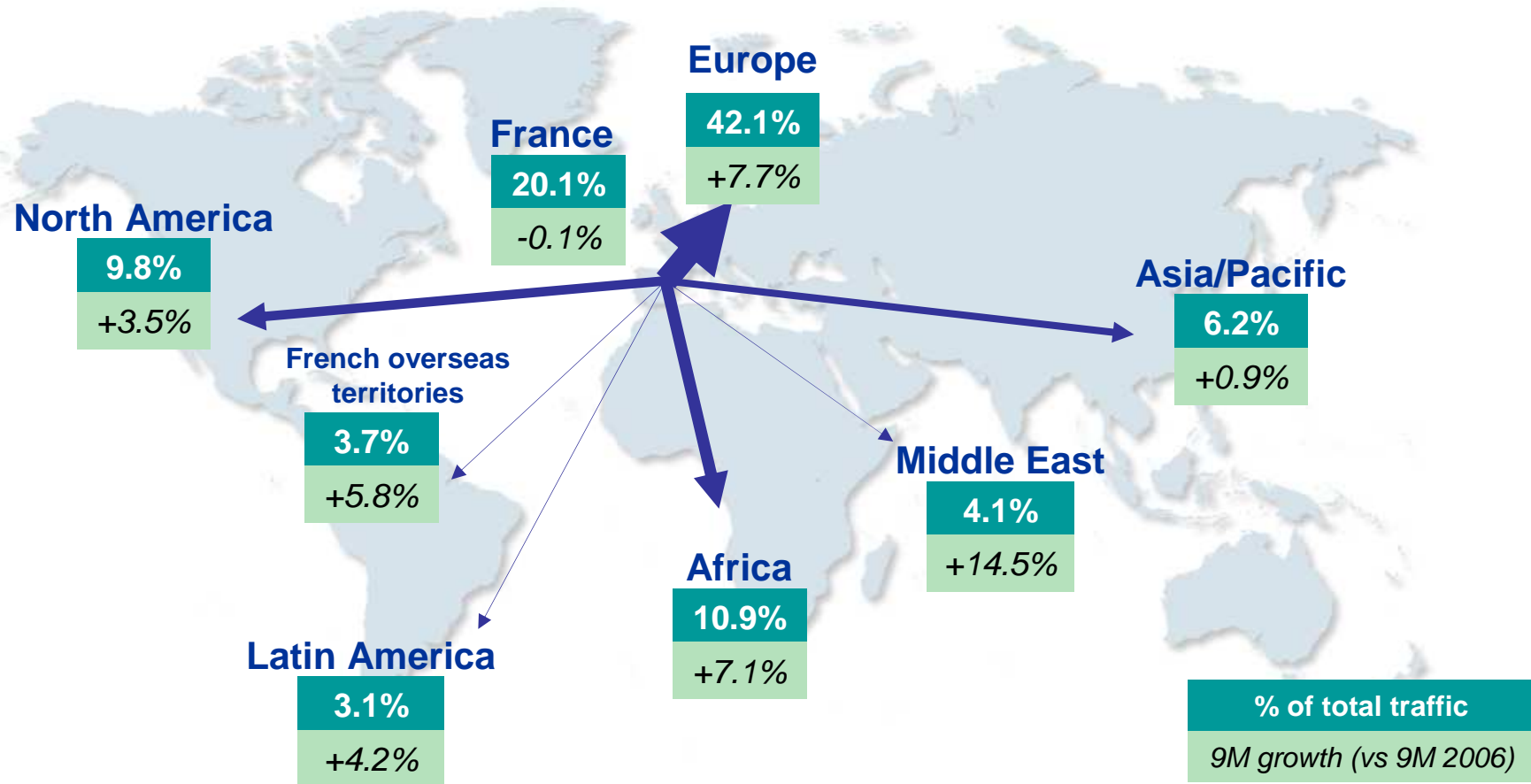


- Passenger traffic increased 5.2% in the first 9 months 2007: +5.7% at Paris-CDG and +4% at Paris-Orly
- Number of aircraft movements: + 2.5% to 586,977

Air traffic in Europe remains buoyant in 9M 2007

9M total traffic: 66 m passengers, +5.2%

Excluding France & Europe: 25 m passengers, +5.5%



Revenue for the first nine months rose 10.6%

	€m		
	9M 2006	9M 2007	Var %
 Airport services	1,273.9	1,363.7	+7.0%
 Real estate	130.5	144.3	+10.6%
 Ground handling	132.6	146.7	+10.7%
 Other activities	163.1	232.0	+42.3%
TOTAL	1,532.8	1,695.5	+10.6%

- Strong growth in consolidated revenue as of September 30, 2007: +10.6%, faster than traffic (+5.2%)
- Dynamic growth of the Airport services revenue
- Good performance of retail activities
- Real Estate growth confirmed
- Ground Handling revenue satisfactory
- Sharp growth in other Activities, through the good results of our subsidiaries

Airport Services revenue up 7%

€m	9M 2006	9M 2007	Var %
Airport Services	1,273.9	1,363.7	+7.0%
<i>Aeronautical fees</i>	501.0	549.8	+9.7%
<i>Ancillary fees</i>	75.0	80.8	+7.8%
<i>Commercial activities</i>	155.1	169.6	+9.3%
<i>Car parks</i>	108.0	112.1	+3.8%
<i>Industrial services</i>	48.3	47.6	-1.5%
<i>Airport tax</i>	264.8	279.1	+5.4%
<i>Rental revenue</i>	51.6	59.5	+15.5%
<i>Others</i>	70.0	65.1	-7.0%

- Aeronautical fees up 9.7% as a result of:
 - A substantial growth in traffic (+5.2%)
 - A 4.25% tariff increase as of April 1st, 2007
- Ancillary fees up 7.8%, with strong support from baggage handling performance
- Commercial revenue benefits from good level of activity in bars and restaurant and in duty-free retailing
- Car parks revenue dynamic but still impacted by the loss of the STIF subsidy
- Slight decline in gas prices passed through to our clients
- Increase in the airport tax revenue
- Growth in rental revenue thanks to the rent indexation (+7,05%) and new leases (la Galerie Parisienne)
- End of the Aerobus activity and slow down in services to the DGAC

Focus on commercial activities

<i>Revenue in €m</i>	9M 2006	9M 2007	Var 07/06
Retail revenue	155.1	169.6	+9.3%
<i>Duty-free retailing</i>	95.0	105.4	+11.0%
<i>Public retail areas</i>	6.6	6.9	+4.4%
<i>Bars & Restaurants</i>	16.1	18.1	+13%
<i>Car rentals</i>	8.5	8.8	+3.2%
<i>Advertising</i>	13.1	13.6	+4.2%
<i>Foreign Exchange</i>	7.5	9.1	+21.1%
<i>Others</i>	8.5	7.8	-8.0%

- Solid duty-free retailing revenue, driven by traffic increase and opening of new shops (la Galerie Parisienne)
- Favorable basis of comparison since new security measures negatively impacted Q3 2006 retail revenue
- Significant increase in the Bars & Restaurants segment, due to good results of recent openings

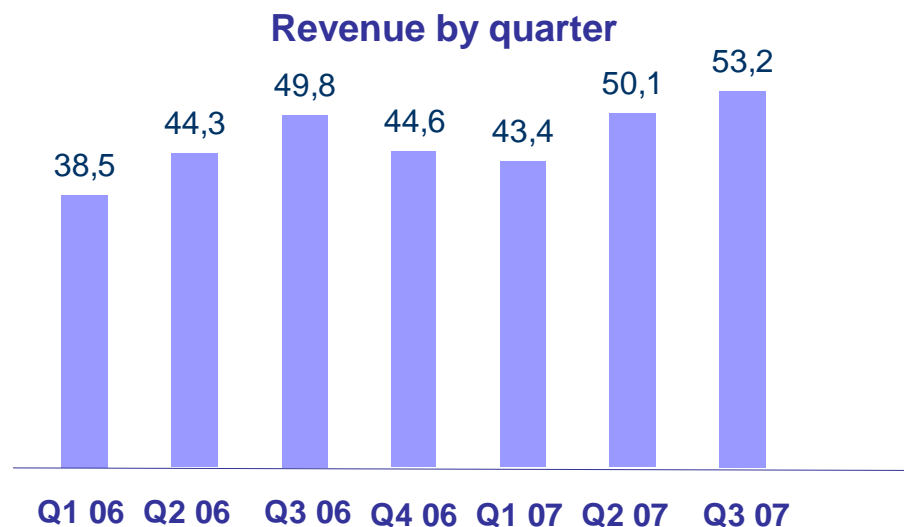
Real Estate growth confirmed

€m	9M 2006	9M 2007	Var %
Real Estate	130.5	144.3	+10.6%
<i>Internal</i>	34.6	41.0	+18.5%
<i>Generated with third parties</i>	95.9	103.3	+7.7%

- Increase of 7.05% in leases, in line with the construction cost index
- Full-year impact of the leasing of new serviced land in 2006 (A380 maintenance hangar + FedEx logistics center + AF Hub maintenance center)
- First leasings in the new cargo terminal “GB2” at the Paris-CDG Airport

Ground Handling services: restructuring in progress

€m	9M 2006	9M 2007	Var %
Ground Handling and related services	132.6	146.7	+10.7%
Ground Handling	95.5	103.4	+8.2%
Security and other services	37.0	43.3	+17%



- Growth in Ground Handling revenue due to new contracts signed in April 2007 (Vueling, BMI Baby et FlyNiki...) and increased activity with existing clients like Continental since beginnings of May 2007
- Following the agreement with the work council, Aéroports de Paris' Board of Directors adopted the restructuring plan (all ground handling activities operated via a 100% owned subsidiary) and the group started implementing the social measures.

Sharp growth in other activities

€m	9M 2006	9M 2007	Var %
Other Activities	163.1	232.0	+42.3%
<i>Hub Télécom</i>	54.5	60.8	+11.4%
<i>SDA</i>	71.9	117.4	+63.4%
<i>ADPM</i>	4.8	5.5	+13.5%
<i>ADPi</i>	23.8	45.3	+90.3%
<i>ADP SA</i>	8.1	3.1	-62.2%

• Strong contribution of SDA :

- Organic growth of 16.7% thanks to dynamic duty-free retailing and international traffic
- Expansion of SDA's perimeter to CDG3 and Orly on January 1, 2007

- Very fast development of ADPi due to big contracts signed in 2006 : Jeddah in Saudi Arabia, Islamabad in Pakistan, and in Lybia.

Appendix

Airlines Services

€m	9M 2006	9M 2007	Var %
Airlines Services	501.0	549.8	+9.7%
<i>Landing</i>	160.4	167.4	+4.0%
<i>Passengers</i>	258.0	290.2	+12.5%
<i>Parking</i>	55.6	64.5	+16.2%
<i>Hydrant</i>	20.2	20.8	+3.2%
<i>Lighting</i>	6.4	6.8	+7.5%